

## QUICK FACTS • FALL 2012

## ENROLLMENT

2,828

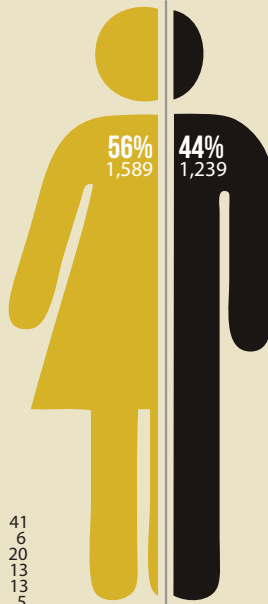
2,724 UG • 104 GRAD

FULL TIME EQUIVALENT (FTE): 2,561

575  
First-Time  
Entering  
Freshmen488  
Juniors731  
Seniors379  
Advanced  
Freshmen27  
Unclassified524  
Sophomores100  
Total  
Graduate  
Students4  
Special/  
Unclassified  
Graduate  
Students

## GRADUATE SCHOOL ENROLLMENT

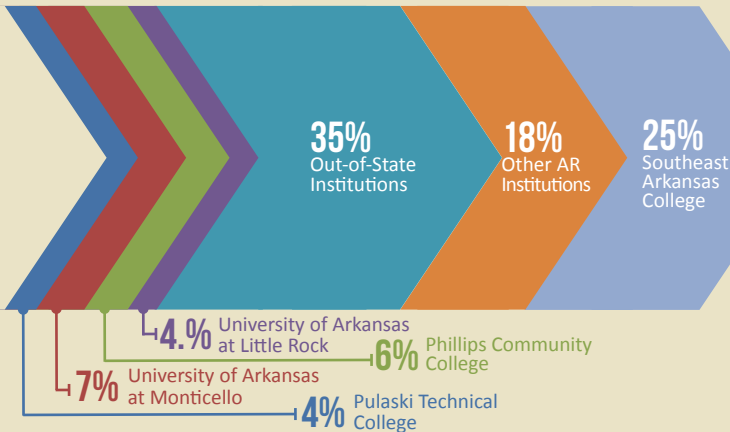
- M.Ed. - Education 41
- M.A.T. - Teaching 6
- M.S. - Addiction Studies 20
- M.S. - Aquaculture Fisheries 13
- M.S. - Agricultural Regulations 13
- M.S. - Computer Science and Technology 5
- PhD in Aquaculture and Fisheries 2

RACIAL/ETHNIC DISTRIBUTION:  
ALL STUDENTS

- African-American (93.2%)
- Caucasian (3.9%)
- Non-Resident Aliens/Int'l Students (1.1%)
- Hispanic (0.9%)
- Amer. Indian/Alaskan Native (0.1%)
- Unknown/Not Reported (0.5%)
- Asian/Pacific Islander (0.2%)

ADMISSIONS  
PROFILE  
FALL 2012 COHORT575  
First-Time  
Freshmen564  
First-time full-time  
degree seeking  
students166  
Undergraduate  
transfer students33  
New Graduate  
Students

## ➔ TRANSFER STUDENTS



## STUDENT CHARACTERISTICS

## HOUSING

62% | 61%  
all students who  
are from AR | undergraduates  
from Arkansas

46%  
UG degree-seeking  
students living on campus

77%  
first-time, first-year  
students who live  
on campus

22%  
undergraduate  
degree-seeking  
students age 23 or older

## FACULTY AND INSTRUCTION

54 Part time | 167 Full time

54% Male | 46% Female

60%  
Full-time  
faculty with  
terminal  
degrees



## TOP 10 UNDERGRADUATE DEGREES BY ENROLLMENT

296  
Biology295  
Business  
Administration270  
Criminal  
Justice Studies158  
Industrial  
Technology119  
Early Childhood  
Education112  
Psychology101  
Agriculture  
Sciences100  
Computer  
Science99  
Human  
Sciences86  
Mass  
CommunicationsTUITION AND FEES  
(FULL-TIME ANNUALIZED)

UG

Full-time students (in-state) \$5,517  
Full-time students (out-of-state) \$10,947  
Part-time students (in-state) \$137/credit hour  
Part-time students (out-of-state) \$318/credit hour  
Room and board (average cost): \$7,180

GRAD

Full-time students (in-state) \$5,364  
Full-time students (out-of-state) \$10,860  
Part-time students (in-state) \$175/credit hour  
Part-time students (out-of-state) \$404/credit hour